

# Interoperability of Systems

---

Controlled Digital Lending



# Composition of Group

- Co-Leads

Jennie Rose Halperin, Library Futures

Allen Jones, The New School

- Groups

Digital Objects

General Circulation / Reserves

Inter-Library Lending

Asset Sharing

# Goals of the Group

Draft a reference model to build and operate a system of components that can enable controlled digital lending within a library's current service portfolio

Focus is on four operational areas of libraries

Course Reserves

General Circulation

Inter-Library Lending

Standards – for Digitization, Bibliographic and Discovery

One functional requirement for collective work

Sharing of digital assets - how do institutions share CDL assets for their own local use?

# Scope and Work Plan

- Scope Questions

Best Practices re: information standards and workflows

CDL – Definition

Provide recommendations for other subgroups, NISO and ISO working groups

OpenURL (ANSI/NISO Z39.88)

ISO 18626

NCIP (ANSI/NISO Z39.83)






- NOT a legal justification for institutional participation in CDL, but recommendations for own-loan functionality and controlled access

# Workplan

Proposed Task	Tentative Due Date
Description of General Workgroup Tasks / Work Plan	Apr 2022
Information Gathering	Jul 2022
Subgroup Research Plans/ Workflow Drafts <ul style="list-style-type: none"><li>- draft of NISO work items</li><li>- Workflow recommendations</li></ul>	Sep 2022
Draft of Subgroup Chapters	Dec 2022
Assembly / Reconciliation of Final Document	Jan 2023
Editing of Assembled Report	March 2023
Publish for Public Comment	April 2023
Reconciliation of Public Comments	May-June 2023
WG Approval of RP to Topic Committee	June 2023
Public Dissemination of Document <ul style="list-style-type: none"><li>- sample library, vendor conformance statements posted</li></ul>	July 2023

Description	Tentative Due Date
Environmental Scan of CDL Systems in production and development	Apr 2022 (done)
Requirements of Special Collections Digitization vs. General Circulation/Inter-Library Lending	May 2022 (done)
Representation of CDL Objects within MARC Standard	Jun 2022
Representation of Terms of Use for the CDL Object	Sep 2022
Analytics and Usage Statistics	Sep 2022

## What we've done together and where we're going

- Established writing process 
- Implementations spreadsheet 
- CDL Glossary 
- CDL Bibliography 
- Define scope and role of group 
- Write user journeys/workflows/roles (in progress)
- Community survey of CDL activities (in progress)
- Draft recommendations of practice (in progress)

# Scope statement

The aim of this group is to identify and define a reference model of recommended practices supporting the technical and functional aspects of Controlled Digital Lending (CDL), an emerging method that allows patrons to electronically access books (print and digital) and book-like objects in a “lend like print” fashion.

Requirements:

- Access controls must be in place to restrict access to digital object
- Controls must be in place to limit access to the print item ***while the digital item is in use***
- Some inventory control mechanism/process coordinates patron access between these two versions to maintain own:loan ratio

CDL-Interoperable: might use the same communication/delivery channels or UX, but not Controlled digital lending

- E-Book ILL
- Sharing of open access materials
- Partial Sharing of Materials (DocDel)



# IS-CDL Membership – Digital Objects

## Lead

Rob Cartolano, Columbia University Libraries

## Members

Bill Maltarich, NYU

Sanford Bingham, FileOpen Systems

Peter Brantley, University of California, Davis

Michael Blackwell, St. Mary's County Library

## IS-CDL Membership – Digital Objects

- Profile standards for discovery, description and delivery in the creation, requesting, supplying and lending of CDL and E-ILL objects.
- Outline best practices for representation of CDL copies within discovery services, evaluate MARC-based, OPDS and other exchange standards
- Evaluate file formats, encryption (format? need?), and accessibility requirements

# IS-CDL Membership - Circulation/Reserves

## Co-Leads

Sebastian Hammer, Index Data

Jill Morris, PALCI

## Members

Peter Murray, Index Data (observer/liaison for ILL)

Scarlet Galvan, Grand Valley State University

Mike Furlough, University of Michigan Library, HathiTrust

Mark Allcock, EBSCO

Kyle Courtney, Harvard University

Sandra Aya Enimil, Yale Library

## Circ Reserves Topics

- Develop recommended end-to-end staff workflow and library staff technical and business requirements.
- Outline delivery technical requirements for browser and mobile delivery of CDL/E-ILL objects to patrons
- Identify / outline own-to-loan procedures and potential circulation interoperability interfaces
- Outline metrics to articulate the transaction and service performance

# Models of Controlled Digital Lending Systems

- Centralized system where institutions collectively upload to a single, shared, cooperative system. ILS and CDL systems are integrated
- Centralized system where institutions collectively upload to a single, shared, cooperative system. ILS and CDL systems are NOT integrated. Own to loan is managed within ILS, CDL manages access controls to digital objects and assets (inter-operable)
- Local digital asset management system where institutions upload to an institutional instance and access, ILS and CDL systems are integrated
- Local digital asset management system, CDL and ILS not integrated, but interoperable

# Next Stages of Work - Focus on Delivery Process First

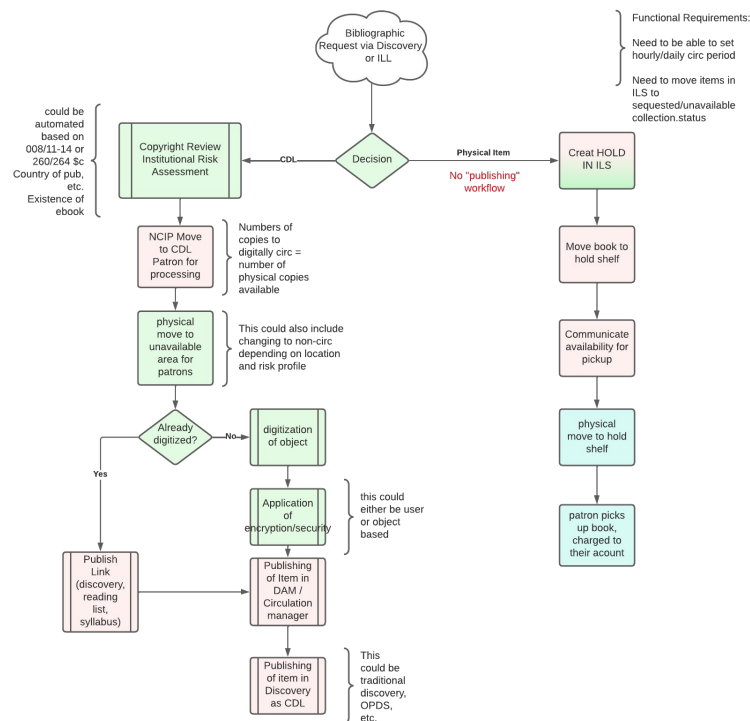
Making user experience recommendations

Chart requesting process (ILL)

Chart processing workflows

Chart delivery workflows

Defining own:loan inventory management controls (NCIP vs. SIP2 vs. ?)



# IS-CDL Membership - Inter-Library Lending

- Co-Leads

Whitney Murphy, ProQuest/Clarivate

Perry Collins, University of Florida

- Members

Michael Rodriguez, University of Connecticut

Peter Collins, OCLC

Mike Richins, Ex Libris/Clarivate

Peter Murray, Index Data

Chris Freeland, Internet Archive

Gerri Moeller, Minitex at University of Minnesota

# Inter-Library Lending Topics

- Identify integration opportunities for component developers and library systems vendors.
- Discuss endpoints and workflow for the exchange of CDL and licensed digital objects between institutions/systems used in digital circulation.
- Draft work items for existing standards groups and identify standards gaps between institutional and broker endpoints.
- Identify interfaces within content vendors and requesting software to lend content on behalf of institutions (proxy loan)
- Articulate best practices for an interoperable user experience
- Outline metrics to articulate the transaction and service performance



# IS-CDL Membership - Asset Sharing

## Asset Sharing Co-Leads

Charles Barlow, Boston Library Consortium

Elizabeth Stregger, Mount Allison University

## Members

Nick Lindsay, MIT Press

Harriet Green, Washington University in St. Louis

Nathan Robertson, University of Maryland

Boaz Nadav-Manes, Lehigh University

# Digital Asset Sharing - Topics

- Outline processes for libraries to securely exchange digital files between CDL systems and/or DAMs.
- Describe the process of discovering representations of CDL objects between lending systems.
- Define description and exchange standards required within the bibliographic record to enable libraries to import CDL objects into local digital asset management systems.
- Articulate technical requirements for the secure exchange of unencrypted digital assets between systems.

# How can I find out what is going on?

NISO Group Website

Email listservs of professional organizations

Email the co-chairs

[jonesa@newschool.edu](mailto:jonesa@newschool.edu)

[jennie@libraryfutures.net](mailto:jennie@libraryfutures.net)

